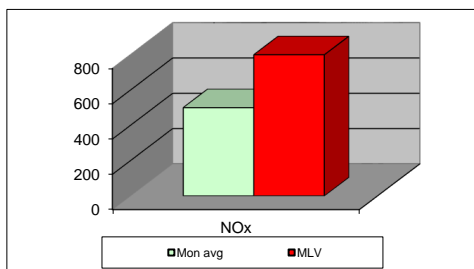
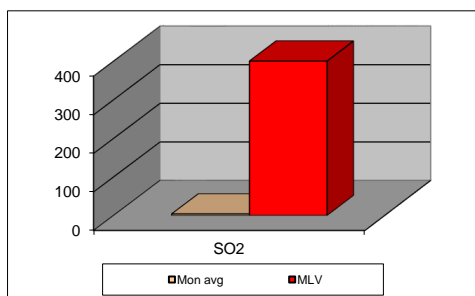
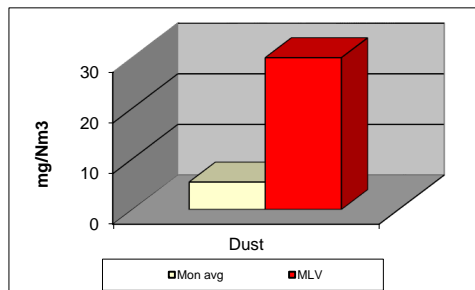


### MONTHLY REPORT FROM EMISSION MONITORING IN TITAN CEMENTARNICA USJE - KILN No.3



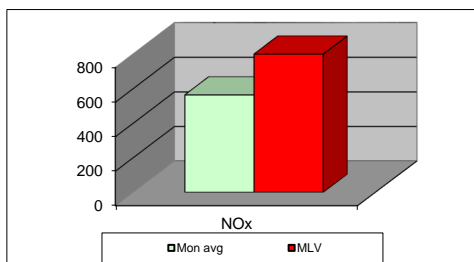
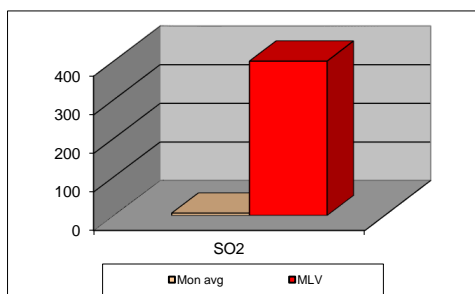
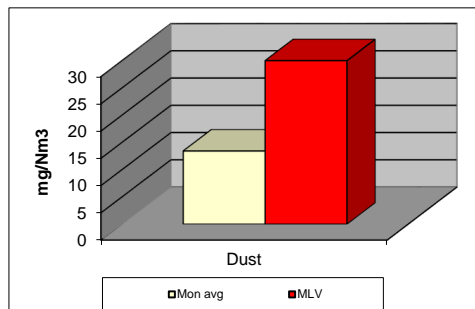
noe.24	Dust (mg/Nm <sup>3</sup> ) МДК 30mg/m <sup>3</sup>	МДК 30mg/m <sup>3</sup>	SO <sub>2</sub> (mg/Nm <sup>3</sup> ) МДК 400mg/m <sup>3</sup>	МДК 400mg/m <sup>3</sup>	NOx (mg/Nm <sup>3</sup> ) МДК 800mg/m <sup>3</sup>	МДК 800mg/m <sup>3</sup>	Comments
01.11.2024	4,55	30	5,96	400	473,58	800	
02.11.2024	4,45	30	6,51	400	449,90	800	
03.11.2024	4,53	30	6,65	400	420,48	800	
04.11.2024	4,82	30	6,34	400	419,02	800	
05.11.2024	4,81	30	6,33	400	431,05	800	
06.11.2024	4,98	30	6,35	400	488,97	800	
07.11.2024	5,07	30	6,06	400	485,49	800	
08.11.2024	5,10	30	5,42	400	518,01	800	
09.11.2024	4,97	30	4,48	400	544,55	800	
10.11.2024	4,97	30	4,86	400	579,75	800	
11.11.2024	5,00	30	5,49	400	541,97	800	
12.11.2024	5,04	30	6,48	400	562,36	800	
13.11.2024	5,08	30	4,25	400	557,40	800	
14.11.2024	5,17	30	3,58	400	516,56	800	
15.11.2024	5,30	30	3,23	400	403,57	800	
16.11.2024	5,19	30	3,69	400	549,83	800	
17.11.2024	5,29	30	1,47	400	543,51	800	
18.11.2024	5,97	30	2,46	400	509,55	800	
19.11.2024	5,57	30	3,26	400	560,63	800	
20.11.2024	5,64	30	4,27	400	508,52	800	
21.11.2024	5,77	30	6,13	400	473,73	800	
22.11.2024	5,61	30	3,14	400	545,63	800	
23.11.2024	5,53	30	1,46	400	498,00	800	
24.11.2024	6,16	30	0,50	400	536,57	800	
25.11.2024	6,16	30	3,77	400	476,85	800	
26.11.2024	6,27	30	2,25	400	480,80	800	
27.11.2024	6,78	30	2,31	400	481,37	800	
28.11.2024	6,28	30	1,10	400	526,29	800	
29.02.2024	6,06	30	1,56	400	397,69	800	
30.11.2024	6,70	30	3,24	400	550,24	800	
<b>Average</b>	<b>5,43</b>	<b>30</b>	<b>4,05</b>	<b>400</b>	<b>500,40</b>	<b>800</b>	

**MLV: Maximum Limit Value**

Explanations: The monthly average values are calculated on the half hour emissin values. Measured values of the concentrations are calculated at 10 vol. of O2  
Results of the measurments are represented in Nm3 (Nm3 - T=273K, P=101,3kP, dry gas)c

**Note:**

## MONTHLY REPORT FROM EMISSION MONITORING IN TITAN CEMENTARNICA USJE - KILN No.4



ное.24	Dust (mg/Nm <sup>3</sup> )	МДК 30mg/m <sup>3</sup>	SO <sub>2</sub> (mg/Nm <sup>3</sup> )	МДК 400mg/m <sup>3</sup>	NOx (mg/Nm <sup>3</sup> )	МДК 800mg/m <sup>3</sup>	Comments
	МДК 30mg/m <sup>3</sup>		МДК 400mg/m <sup>3</sup>		МДК 800mg/m <sup>3</sup>		
01.11.2024	13,62	30	6,85	400	578,40	800	
02.11.2024	13,56	30	6,67	400	583,31	800	
03.11.2024	13,12	30	6,30	400	533,10	800	
04.11.2024	13,60	30	8,21	400	522,64	800	
05.11.2024	13,79	30	7,76	400	565,55	800	
06.11.2024	13,89	30	7,07	400	581,78	800	
07.11.2024	14,09	30	4,98	400	583,60	800	
08.11.2024	13,56	30	6,82	400	521,77	800	
09.11.2024	14,04	30	3,49	400	568,98	800	
10.11.2024	13,92	30	6,27	400	535,73	800	
11.11.2024	13,92	30	4,79	400	555,15	800	
12.11.2024	12,41	30	5,15	400	579,58	800	
13.11.2024	12,64	30	5,46	400	564,14	800	
14.11.2024	13,73	30	4,83	400	559,76	800	
15.11.2024	13,87	30	4,43	400	590,54	800	
16.11.2024	13,46	30	4,68	400	568,51	800	
17.11.2024	13,80	30	6,08	400	572,08	800	
18.11.2024	13,63	30	6,29	400	576,85	800	
19.11.2024	14,00	30	6,82	400	568,27	800	
20.11.2024	0,00	30	0,00	400	0,00	800	
21.11.2024	0,00	30	0,00	400	0,00	800	
22.11.2024	12,64	30	7,85	400	587,04	800	
23.11.2024	14,11	30	6,87	400	566,21	800	
24.11.2024	12,98	30	6,39	400	593,08	800	
25.11.2024	12,92	30	8,43	400	552,63	800	
26.11.2024	13,06	30	7,75	400	579,44	800	
27.11.2024	12,52	30	6,89	400	567,58	800	
28.11.2024	12,55	30	6,53	400	559,83	800	
29.02.2024	13,78	30	6,22	400	542,41	800	
30.11.2024	13,24	30	5,89	400	562,13	800	
<b>Average</b>	<b>13,43</b>	<b>30</b>	<b>6,27</b>	<b>400</b>	<b>564,36</b>	<b>800</b>	

**MLV: Maximum Limit Value**

Explanations: The monthly average values are calculated on the half hour emissin values. Measured values of the concentrations are calculated at 10 vol. of O2  
Results of the measurments are represented in Nm3 (Nm3 - T=273K, P=101,3kP, dry gas)

**Note:**